



Listing Constructional Data Report (CDR)

1.0 Reference and Address			
Report Number	GZ11090743-1	Original Issued: 5-Jan-2012	Revised: None
Standard(s)	Audio, Video and Similar Electronic Apparatus - Safety Requirements (UL 60065 Seventh Edition Rev December 11, 2007 CSA-C22.2 No. 60065:03 Rev April 2006)		
Applicant	Wuhan ELECA Electronics Co., Ltd.	Manufacturer	Wuhan ELECA Electronics Co., Ltd.
Address	No.12, the 5 th Jiangjun Road, Dongxi Lake District, Wuhan, Hubei	Address	No.12, the 5 th Jiangjun Road, Dongxi Lake District, Wuhan, Hubei
Country	China	Country	China
Contact	Mr. Liu Jing	Contact	Mr. Liu Jing
Phone	86-27-59003789	Phone	86-27-59003789
FAX	86-27-59508086	FAX	86-27-59508086
Email	ljg@musicleca.com	Email	ljg@musicleca.com

2.0 Product Description	
Product	Compact Bass Amp Head
Brand name	Ashdown
Description	The product covered by this report is a Compact Bass Amp Head for general use.
Models	MiBass550
Model Similarity	NA
Ratings	110-120 Vac 50/60 Hz 500 W Class I
Other Ratings	NA

3.0 Product Photographs

Photo 1 - External view



Photo 2 - External view



3.0 Product Photographs

Photo 3 - Internal view

The internal wires were fixed on metal enclosure.

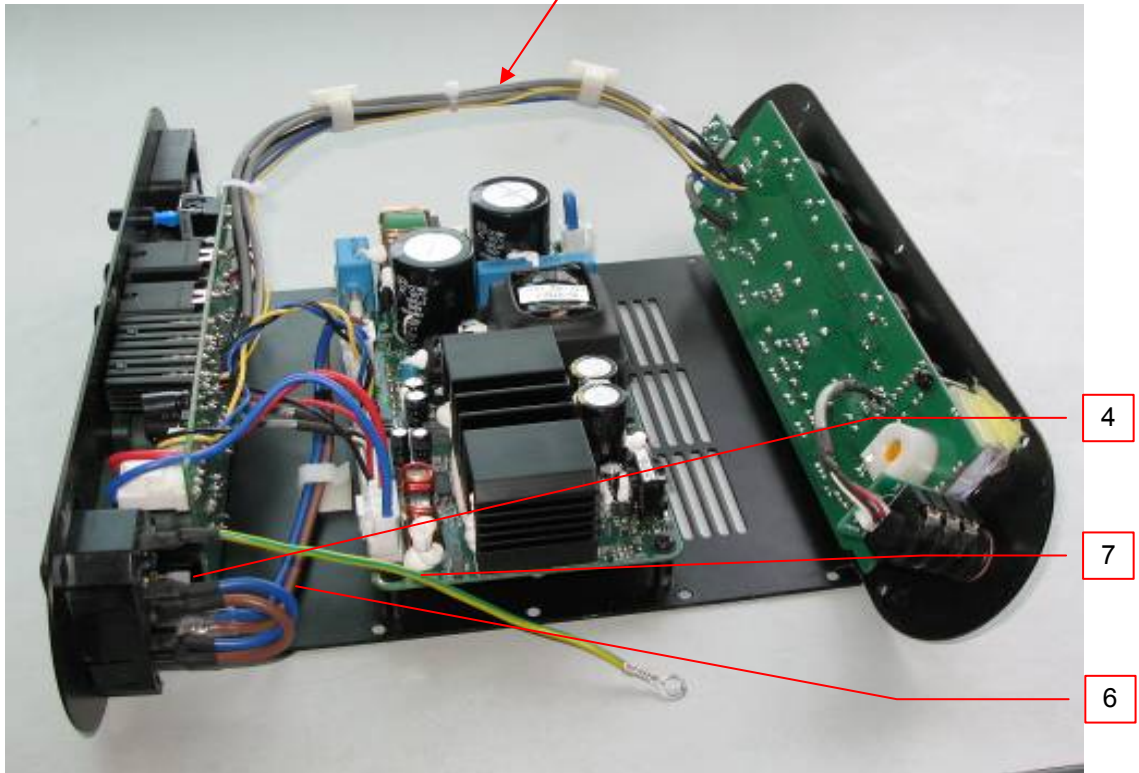
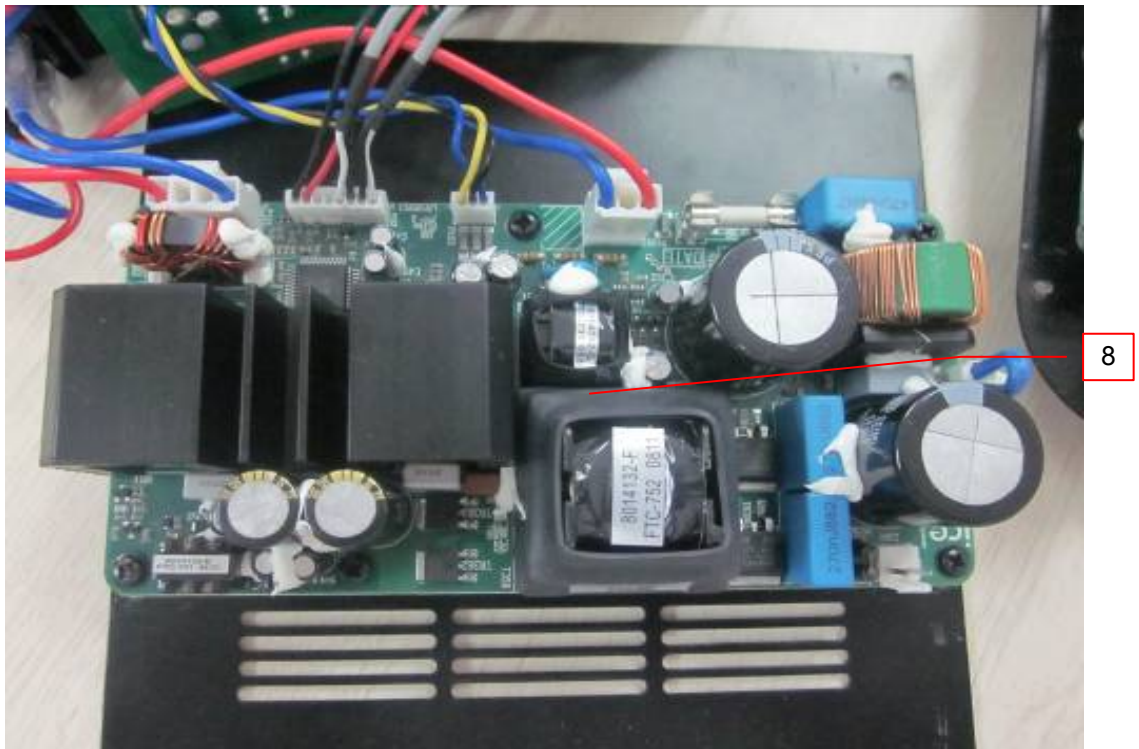


Photo 4 - Internal view



3.0 Product Photographs

Photo 5 - Internal view

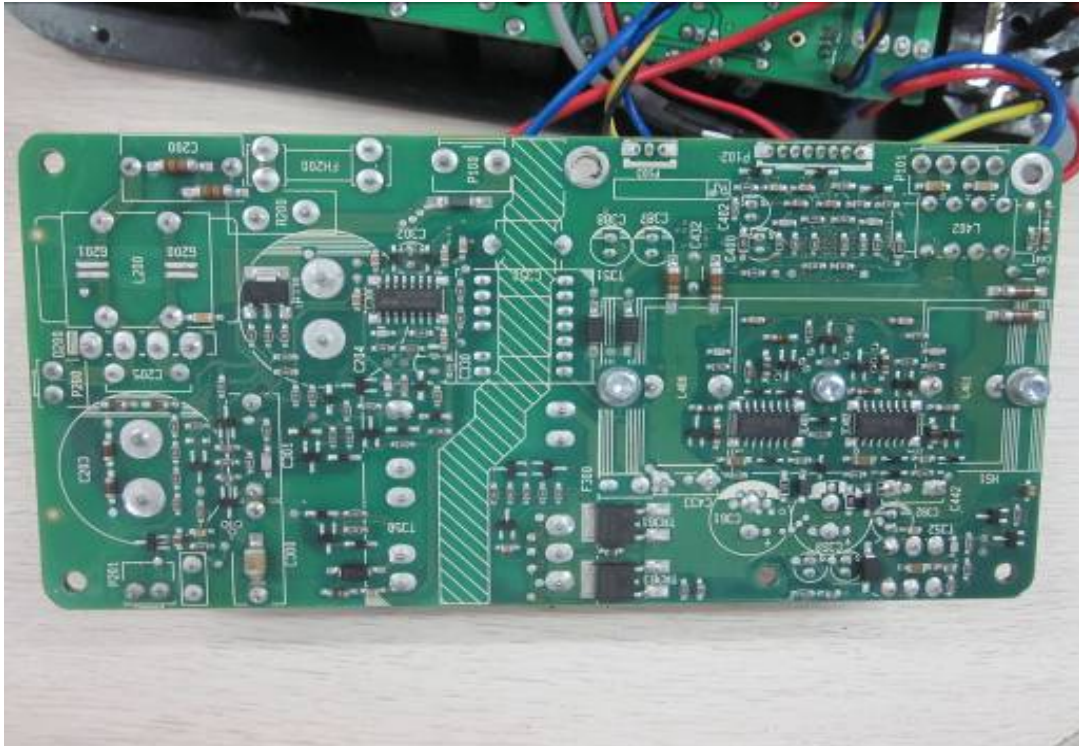
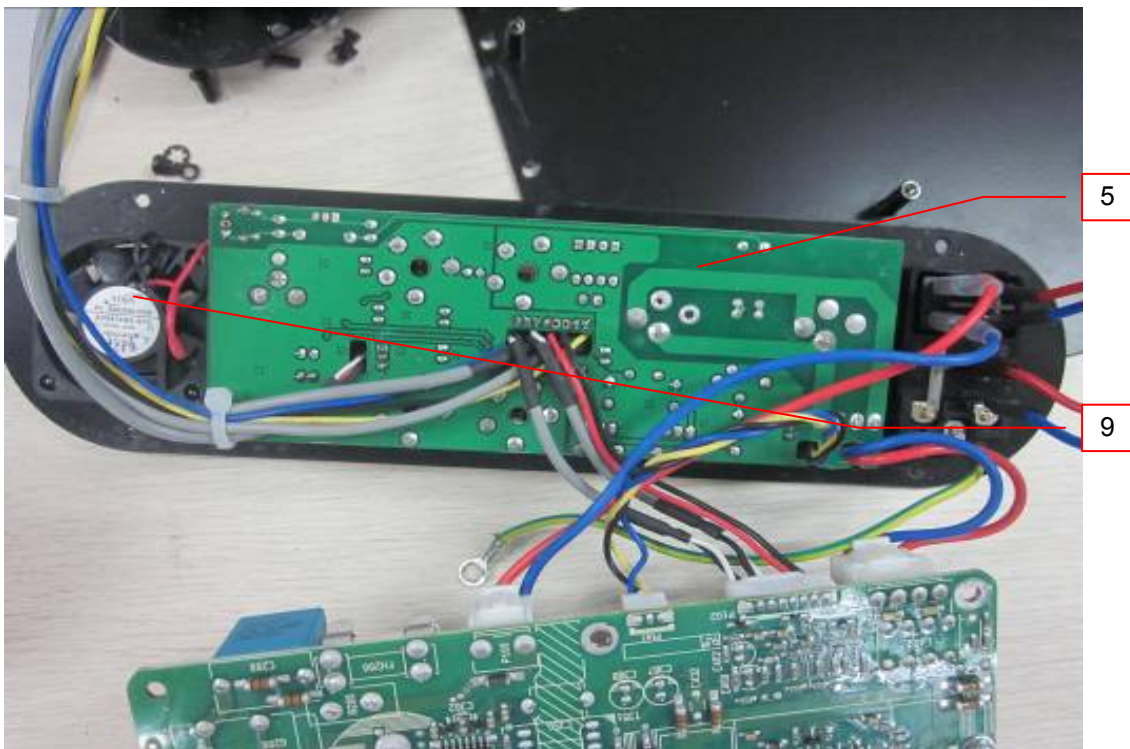


Photo 6 - Internal view



3.0 Product Photographs

Photo 7 - Internal view



4.0 Critical Components						
Photo #	Item no. ¹	Name	Manufacturer/ trademark ²	Type / model ²	Technical data and securement means	Mark(s) of conformity ³
1	1	Power cord sets (not shown)	ZHENJIANG HUAYIN INSTRUMENT & ELECTRICAL EQUIPMENT CO LTD	3UTJ2	plug: 5-15P, 10A/125V; cord: 18AWG, 3x0.824 mm ² , SVT, VW-1, 75°C, 300V; connector: 10A/125V, C13	UL & CSA
			Various	Various	plug: 5-15P, 10A/125V; cord: 18AWG, 3x0.824 mm ² , SVT, VW-1, 75°C, 300V; connector: 10A/125V, C13	UL & CSA
1	2	Appliance inlet with switch and fuse	JACKSON ELECTRONICS INDUSTRIAL CORP	JR-101-1F	10A 250VAC	cURus
			RONG FENG INDUSTRIAL CO LTD	RF-2004	10A 250VAC	cURus
1	3	Fuse in appliance inlet	CHANGZHOU CHINA-LAY ELECTRONICS CO LTD	51T	T5A L250V, Φ5.2×20mm	cURus
			Various	Various	T5A L250V, Φ5.2×20mm	cURus
3	4	Shrinking tubing	Shenzhen Woer Heat-Shrinkable Material Co., Ltd.	RSFR-H	VW-1, 125°C, 600V	cURus
6	5	PCB	KINGBOARD LAMINATES(MAC AO COMMERCIAL OFFSHORE) LTD.	KB-6160	V-0, 130°C	cURus
			Various	Various	V-0, 130°C	cURus
3	6	Internal power wire (between inlet and PCB, between inlet and switch)	XINGDA ELECTRONICS WIRE & CABLE CO LTD	1672	18AWG, 105°C, 300V, VW-1	cURus
			Various	1672	18AWG, 105°C, 300V, VW-1	cURus
3	7	Grounding wire	Various	Various	18AWG, 105°C, 300V, yellow and green	cURus
4	8	Switching power supply	Bang & Olufsen ICEpower A/S	ICEpower 125ASX2	100-120V~ 50/60Hz 450W	cURus
6	9	DC brushless fan	ADDA CORP	AD0424MS-G70	24 Vdc 0.08 A	cURus

NOTES:

- 1) Not all item numbers are indicated (called out) in the photos, as their location is obvious.
- 2) "Various" means any type, from any manufacturer that complies with the "Technical data and securement means" and meets the "Mark(s) of conformity" can be used.
- 3) Indicates specific marks to be verified, which assures the agreed level of surveillance for the component. "NR" - indicates Unlisted and only visual examination is necessary. "See 5.0" indicates Unlisted components or assemblies to be evaluated periodically refer to section 5.0 for details.

5.0 Critical Unlisted CEC Components

No Unlisted CEC components are used in this report.

6.0 Critical Features

Recognized Component - A component part, which has been previously evaluated by an accredited certification body with restrictions and must be evaluated as part of the basic product considering the restrictions as specified by the Conditions of Acceptability.

Listed Component - A component part, which has been previously Listed or Certified by an accredited Certification Organization with no restrictions and is used in the intended application within its ratings.

Unlisted Component - A part that has not been previously evaluated to the appropriate designated component standard. It may also be a Listed or Recognized component that is being used outside of its evaluated Listing or component recognition.

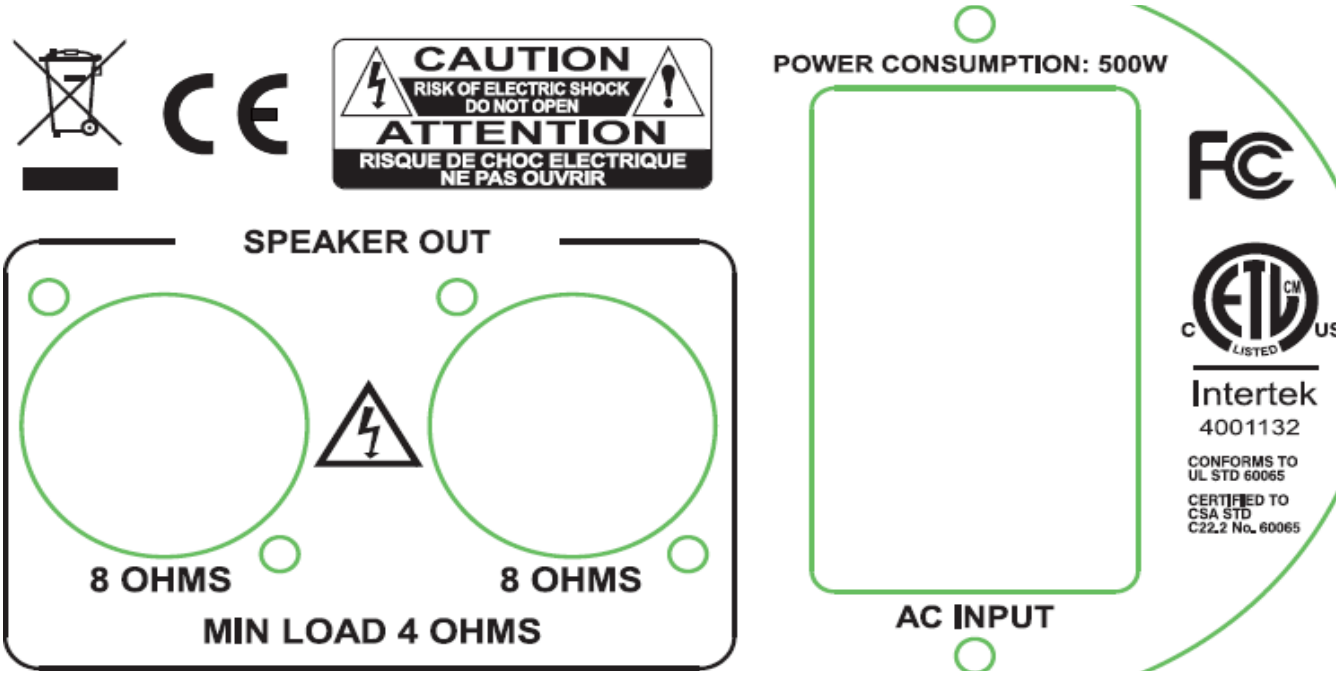
Critical Features/Components - An essential part, material, subassembly, system, software, or accessory of a product that has a direct bearing on the product's conformance to applicable requirements of the product standard.

Construction Details - For specific construction details, reference should be made to the photographs and descriptions. All dimensions are approximate unless specified as exact or within a tolerance. In addition to the specific construction details described in this Report, the following general requirements also apply.

1. Spacing - In primary circuits, 2.0 mm minimum spacing are maintained through air and over surfaces of insulating material between current-carrying parts of opposite polarity and 2.5 mm minimum between such current-carrying parts and dead-metal parts or low voltage isolated circuits.
2. Mechanical Assembly - Components such as switches, fuseholders, connectors, wiring terminals and display lamps are mounted and prevented from shifting or rotating by the use of lockwashers, starwashers, or other mounting format that prevents turning of the component.
3. Corrosion Protection - All ferrous metal parts are protected against corrosion by painting, plating or the equivalent.
4. Accessibility of Live Parts - All uninsulated live parts in primary circuitry are housed within a metal enclosure constructed with no openings other than those specifically described in Sections 4 and 5.
5. Grounding - All exposed dead-metal parts and all dead-metal parts within the enclosure that are exposed are connected to the grounding lead of the power supply cord or the equipment grounding terminal.
6. Internal Wiring - Internal wiring is routed away from sharp or moving parts. Internal wiring leads terminating in soldered connections are made mechanically secure prior to soldering. Recognized Component separable (quick disconnect) connectors of the positive detent type, closed loop connectors, or other types specifically described in the text of this report are also acceptable as internal wiring terminals. At points where internal wiring passes through metal walls or partitions, the wiring insulation is protected against abrasion or damage by plastic bushings or grommets.
7. Schematics - Refer to Illustration No(s). 3 for schematics requiring verification during Field Representative Inspection Audits.
8. Markings - The product is marked on a component labeling system as follows:
 - manufacturer's name, trade name or trade mark,
 - model number,
 - electrical ratings (volts, input current & frequency)Refer to Illustration No.1 for details.
9. Cautionary Markings - The following are required:
 - Refer to Illustration No.1 for details.
10. Installation, Operating and Safety Instructions - Instructions for installation and use of this product are provided by the manufacturer. Refer to Illustration No(s). 2 for details.

7.0 Illustrations

Illustration 1 - Marking



ASHDOWN

SERIAL NO:-



AC-INPUT



-50/60Hz FUSE:



110-120V~

T5AL

Model: MiBass550

不干胶要覆膜：
 粘性要好。

16 X 6 mm 圆角R1.5

28 X 6 mm 圆角R1.1

These marks above (voltage, model) and serial number will be printed on label paper, labeled on product, and covered with transparent glue tape.

1	1	2	7	0	0	0	0	1
---	---	---	---	---	---	---	---	---



生产： 年份 第 27 周 流水机号

date code: 2011 year 27th week

7.0 Illustrations

Illustration 2 - Manual (partial)

Important Safety Instructions

BASIC PRECAUTIONS

WARNING - When using electrical products, basic precautions should be followed, including the following:

1. Read all the instructions before using the product.
2. Do not use this product near water – for example, near a bathtub, washbowl, kitchen sink, in a wet basement or near a swimming pool.
3. This product may cause permanent hearing loss. Do not operate for long periods of time at a high volume level or at any level that is uncomfortable. If you experience any hearing loss or ringing in the ears, you should consult an audiologist.
4. Make sure nothing interferes with the ventilation of the product when in use.
5. The product should be located away from heat sources such as radiators, heat registers, or other products that produce heat.
6. The product should be connected to a power supply of the type described in the operating instructions or as marked on the product.
7. The power supply cord of the product should be unplugged from the outlet when left unused for a long period of time.
8. Care should be taken so that objects do not fall and liquids are not spilled into the enclosure through openings.
9. The product should be serviced by qualified personnel when:
 - a. The power supply cord or the plug has been damaged; or
 - b. Objects have fallen, or liquid has been spilled into the product; or
 - c. The product has been exposed to rain or moisture; or
 - d. The product does not appear to operate normally or exhibits marked change in performance; or
 - e. The product has been dropped, or the enclosure damaged.

10. Do not attempt to service the product. All servicing should be referred to qualified service personnel.
11. For continued protection against the risk of fire, replace fuses only with those of the same type and rating as indicated on the back of the product.
12. The MAINS plug or an appliance coupler is used as the disconnect device, which shall remain readily operable.

WARNINGS USED ON THE EQUIPMENT

WARNING TO REDUCE THE RISK OF FIRE OR ELECTRICAL SHOCK DO NOT EXPOSE THIS EQUIPMENT TO RAIN OR MOISTURE.

WARNING - ATTENTION
THIS APPARATUS MUST BE EARTHED FOR CONTINUED PROTECTION AGAINST RISK OF FIRE. REPLACE ONLY WITH SAME TYPE AND RATING OF FUSE. UTILISER UN FUSIBLE DE RECHANGE DE MEME TYPE ET CALIBRE.



The lightning flash with the arrow head symbol within an equilateral triangle is intended to alert the user to the presence of uninsulated 'dangerous voltage' within this product's enclosure that may be of sufficient magnitude to constitute a risk of electric shock.



The exclamation point within an equilateral triangle is intended to alert the user to the presence of important operating and maintenance (servicing) instructions in the literature accompanying this product.

GROUNDING INSTRUCTIONS

This product must be grounded (earthed). If it should malfunction or break down, grounding provides a path of least resistance for electric current to reduce the risk of electric shock. This product is equipped with a supply cord having an equipment grounding conductor and a grounding plug. The plug must be plugged into an appropriate outlet that is properly installed and grounded in accordance with the local codes and ordinances.

DANGER - Improper connection of the equipment grounding conductor can result in a risk of electric shock. Check with a qualified electrician or serviceman if you are in doubt as to whether the product is properly grounded. Do not modify the plug provided with the product – if it will not fit the outlet, have a suitable outlet fitted.

The wires in this mains cord are coloured in accordance with the following code:

Green & Yellow - Earth
Blue - Neutral
Brown - Live

CE MARK FOR EUROPEAN HARMONISED STANDARDS



The CE mark which is attached to these products means it conforms to EMC Directive (89/69/EEC), CE mark Directive (93/68/EEC) and Low Voltage Directive (72/23/EEC).



8.0 Test Summary			
Evaluation Period	19 Sep 2011 - 29 Dec 2011		Project No. GZ11090743
Sample Rec. Date	19-Dec-2011	Condition Prototype	Sample ID. S11090743-001~005
Test Location	China CEPREI Laboratory		
Test Procedure	Testing at Manufacturers Premises		
Determination of the result includes consideration of measurement uncertainty from the test equipment and methods. The product was tested as indicated below with results in conformance to the relevant test criteria.			
The following tests were performed:			
Test Description	UL 60065 Seventh Edition Rev December 11, 2007 CSA-C22.2 No. 60065.03 Rev April 2006 Clause		
Marking test	5.1		
Normal Operation	4.2.4 & 5		
Temperature rise measurements	7.1		
Dielectric Strength Test for insulation material	8.8		
Shock Hazard Under Normal Operating Conditions	9.1.1		
External Force Test to Enclosure	9.1.7		
Humidity Test	10.2		
Insulation Resistance and Dielectric Strength	10.3		
Fault Conditions	11.2		
Vibration Test	12.1.2		
Impact Test	12.1.3		
Drop Test	12.1.4		
Clearances and Creepage Distances Measurement	13.3 & 13.4		
Peak Inrush Current Test	14.6.6		
Grounding Path Test	15.2		
Screw Securement Test	17.1		

8.1 Signatures			
A representative sample of the product covered by this report has been evaluated and found to comply with the applicable requirements of the standards indicated in Section 1.0.			
Completed by:	Walis Wan	Reviewed by:	Spark He
Title:	Engineer	Title:	Project Engineer
Signature:	<i>Walis Wan</i>	Signature:	<i>Spark He</i>

9.0 Correlation Page For Multiple Listings

The following products, which are identical to those identified in this report except for model number and Listee name, are authorized to bear the ETL label under provisions of the Intertek Multiple Listing Program.

BASIC LISTEE	Wuhan ELECA Electronics Co., Ltd.
Address	No.12, the 5th Jiangjun Road, Dongxi Lake District, Wuhan, Hubei
Country	China
Product	Compact Bass Amp Head

MULTIPLE LISTEE 1	None				
Address					
Country					
Brand Name					
ASSOCIATED MANUFACTURER					
Address					
Country					
<table border="1" style="width: 100%;"> <tr> <td style="width: 50%;">MULTIPLE LISTEE 1 MODELS</td> <td style="width: 50%;">BASIC LISTEE MODELS</td> </tr> <tr> <td> </td> <td> </td> </tr> </table>		MULTIPLE LISTEE 1 MODELS	BASIC LISTEE MODELS		
MULTIPLE LISTEE 1 MODELS	BASIC LISTEE MODELS				

MULTIPLE LISTEE 2	None				
Address					
Country					
Brand Name					
ASSOCIATED MANUFACTURER					
Address					
Country					
<table border="1" style="width: 100%;"> <tr> <td style="width: 50%;">MULTIPLE LISTEE 2 MODELS</td> <td style="width: 50%;">BASIC LISTEE MODELS</td> </tr> <tr> <td> </td> <td> </td> </tr> </table>		MULTIPLE LISTEE 2 MODELS	BASIC LISTEE MODELS		
MULTIPLE LISTEE 2 MODELS	BASIC LISTEE MODELS				

MULTIPLE LISTEE 3	None				
Address					
Country					
Brand Name					
ASSOCIATED MANUFACTURER					
Address					
Country					
<table border="1" style="width: 100%;"> <tr> <td style="width: 50%;">MULTIPLE LISTEE 3 MODELS</td> <td style="width: 50%;">BASIC LISTEE MODELS</td> </tr> <tr> <td> </td> <td> </td> </tr> </table>		MULTIPLE LISTEE 3 MODELS	BASIC LISTEE MODELS		
MULTIPLE LISTEE 3 MODELS	BASIC LISTEE MODELS				

10.0 General Information

The Applicant and Manufacturer have agreed to produce, test and label ETL Listed products in accordance with the requirements of this Report. The Manufacturer has also agreed to notify Intertek and to request authorization prior to using alternate parts, components or materials.

COMPONENTS

Components used shall be those itemized in this Intertek report covering the product, including any amendments and/or revisions.

LISTING MARK

The ETL Listing mark applied to the products shall either be separable in form, such as labels purchased from Intertek, or on a product nameplate or other media only as specifically authorized by Intertek. Use of the mark is subject to the control of Intertek.

MANUFACTURING AND PRODUCTION TESTS

Manufacturing and Production Tests shall be performed as required in this Report.

FOLLOW-UP SERVICE

Periodic unannounced audits of the manufacturing facility (and any locations authorized to apply the mark) shall be scheduled by Intertek. An audit report shall be issued after each visit. Special attention will be given to the following:

1. Conformance of the manufactured product to the descriptions in this Report.
2. Conformance of the use of the ETL mark with the requirements of this Report and the Certification Agreement.
3. Manufacturing changes.
4. Performance of specified Manufacturing and Production Tests.

In the event that the Intertek representative identifies non-conformance(s) to any provision of this Report, the Applicant shall take one or more of the following actions:

1. Correct the non-conformance.
2. Remove the ETL Mark from non-conforming product.
3. Contact the issuing product safety evaluation center for instructions.

10.1 Evaluation of Unlisted Components

Because Unlisted Components are uncontrolled, and they do not fall under a third party follow up program, Intertek may require these components to be tested and/or evaluated at least once annually, more often for certain components, as part of the independent certification process. The Unlisted Components in Section 5.0 require testing and/or evaluation as indicated.

Note to Intertek Follow Up Inspector: The Component Evaluation Center, CEC, will notify you in writing when these components must be selected and sent to the CEC for re-evaluation

Ship the samples to:
Intertek Testing Services Shenzhen Limited Guangzhou Branch
ETL Component Evaluation Center
Block E, No. 7-2 Guang Dong Software Science Park, Caipin Road, Guangzhou Science
CETDD Guangzhou, China.
Attn: Ms. Joey Kuang
Sample Disposition: Due to the destructive nature of the testing, all samples will be discarded at the conclusion of testing unless, the manufacturer specifically requests the return of the samples. The request for return **must** accompany the initial component

11.0 Manufacturing and Production Tests

The manufacturer agrees to conduct the following Manufacturing and Production Tests as specified:

Required Tests

- Dielectric Voltage Withstand Test
- Grounding Continuity Test

11.1 Dielectric Voltage Withstand Test

Method

One hundred percent of production of the products covered by this Report shall be subjected to a routine production line dielectric withstand test.

The test shall be conducted on products, which are fully assembled. Prior to applying the test potential, all switches, contactors, relays, etc., should be closed so that all primary circuits are energized by the test potential. If all primary circuits cannot be tested at one time, then separate applications of the test potential shall be made.

The test voltage specified below shall be applied between primary circuits and accessible dead-metal parts. The test voltage may be gradually increased to the specified value but must be maintained at the specified value for one second or one minute as required.

Test Equipment

The test equipment shall incorporate a transformer with an essentially sinusoidal output, a means to indicate the applied test potential, and an audible and/or visual indicator of dielectric breakdown.

The test equipment shall incorporate a voltmeter in the output circuit to indicate directly the applied test potential if the rated output of the test equipment is less than 500VA.

If the rated output of the test equipment is 500VA or more, the applied test potential may be indicated by either:

- 1 - a voltmeter in the primary circuit;
- 2 - a selector switch marked to indicate the test potential; or
- 3 - a marking in a readily visible location to indicate the test potential for test equipment having a single test potential output.

In cases 2 and 3, the test equipment shall include a lamp or other visual means to indicate that the test potential is present at the test equipment output. All test equipment shall be maintained in current calibration.

Products Requiring Dielectric Voltage Withstand Test:

<u>Product</u>	<u>Test Voltage</u>	<u>Test Time</u>
All products covered by this Report.		
a. Between input circuit and accessible enclosure surface	800 Vac or 1130 V dc	1-4 s
b. Between input circuits and secondary circuits/output terminals	1500 Vac or 2120 V dc	1-4 s

11.2 Grounding Continuity Test

Method

Each product listed below shall be subjected to a test to determine that there is continuity between accessible dead-metal parts of the product and the grounding pin or blade of the attachment plug.

If all accessible dead metal is connected, only a single test need be performed. A visual or audible device (ohmmeter, buzzer, etc.) may be used to indicate grounding continuity.

Products Requiring Grounding Continuity Test:

All products covered by this Report.

