

SUPERFLY SPECIFICATIONS



Superfly Programmable Bass Amplifier

Instrument Input Range 100mV – 5V
 Balanced DI Output (Pre/Post EQ switchable) 600 Ohms, - 20dB
 Line Output 10K Ohms, 0dB
 Effects Loop 10K Ohms, 0dB
 Digital Interfaces USB, MIDI
 Programme Memories 30 Factory, 69 User
 EQ +/- 15dB at 60Hz, 180Hz, 340Hz, 660Hz, 1.3kHz, 2.6kHz, 5kHz
 Power Output 2 x 250 Watts RMS into 4 Ohms
 Weight 10lbs/4.5Kg
 Dimensions (WxHxD) 8.7"/220mm x 3.4"/86mm x 14.2"/360mm

Superfly 11528 Neo Bass Cabinet

Speaker Configuration (Neodymium drivers) 1 X 15" / 2 X 8"
 Power Handling 600 Watts RMS
 Impedance 4 Ohms x 2 (Bi-wired 1 x 15", 2 x 8")
 Weight 50.6lbs/23 Kg
 Dimensions (WxDxH) 24"/610mm x 13.2"/335mm x 20.1"/510mm

Superfly 21028 Neo Bass Cabinet

Speaker Configuration (Neodymium drivers) 2 x 10" / 2 X 8"
 Power Handling 600 Watts RMS
 Impedance 4 Ohms x 2 (Bi-wired 2 x (10" + 8"))
 Weight 57.2lbs/26 Kg
 Dimensions (WxDxH) 24"/610mm x 13.2"/335mm x 20.1"/510mm



Ashdown Engineering reserves the right to change specifications without notice.

www.ashdownmusic.com



SUPERFLY

Compact Programmable Bass Amplifier

SUPERFLY Smaller, Lighter, Cleverer

Ashdown Engineering's extraordinary new Superfly combines a sophisticated programmable bass preamplifier and a powerful 2 x 250 Watts RMS power section in a compact bass amp head that weighs in at just 10 pounds. A product of the innovative Ashdown Labs development programme, the Superfly is gifted with a powerful, authoritative sound with a strong, controlled bottom end and clear, precise highs, all courtesy of an advanced digital power amp section.

Programming the preamplifier is an intuitive and straightforward process. The user can store 69 programmes comprising of input level, 7-band graphic equalisation and compression settings, and switch them via any MIDI-compatible pedal to achieve an exceptional degree of live performance control on stage. In addition, a further 30 factory settings are available.

Complementing the Superfly programmable bass amp is a choice of two new Superfly ultra-light Neo-loaded bass cabinets – a 2 x 10" / 2 x 8" and a 1 x 15" / 2 x 8". Designed to be used singly with the Superfly head, both cabinets are constructed from Poplar ply with Birch baffles and are protected by a durable PA grade spatter paint finish. Bi-wire connection with the amplifier is made via dual Speakon cables.



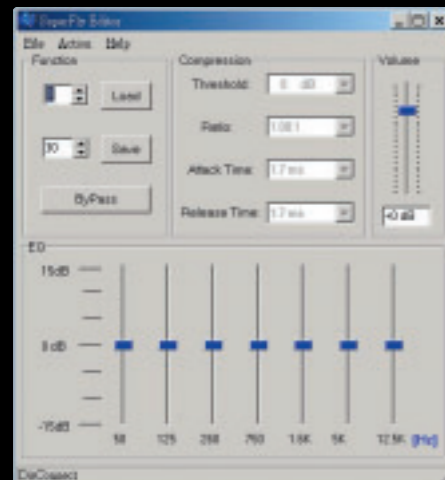
Advanced Mechanical Design

The mechanical design of the Superfly is every bit as innovative as its electronic design. Precision engineered from ultra-light weight magnesium alloy, the chassis features a fold-out carrying handle which also doubles as a stand to incline the front panel at a convenient operating angle, and lugs for a removable carrying strap (supplied).



Create And Store Your Own Sounds

Programming the Superfly is easy, either from the front panel or using the supplied PC editing software. You can edit and store settings for the Input Level, 7-band EQ and Compression Ratio from the front panel, with additional control over Compression Threshold, Attack Time and Release Time available from the editing software.



Total Performance Control

Any MIDI-compatible footswitch can be used to select different programmes while playing, providing an unrivalled level of flexibility and total performance control.

